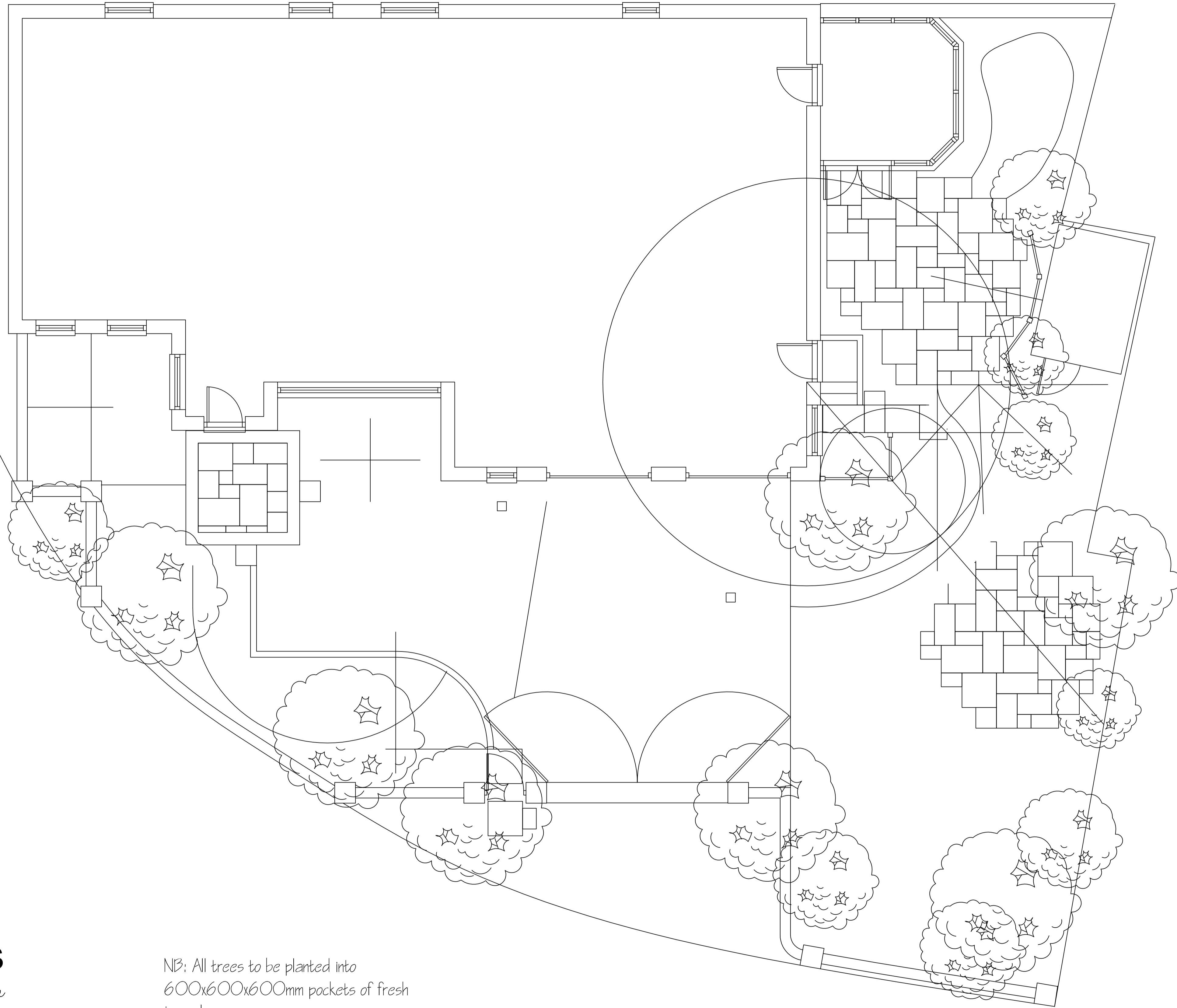


Block planting to form hedge 500mm high
 'Hebe topiary'
 Climber on all house frontage on wires -
 Wisteria
 Focal point
 Existing footpath
 Gravel over existing surface including pocket
 planting
 Shade tolerant climber/ shrub - Pyracantha
 type
 Focal point
 Stepping stones
 Brick edging
 Small tree with upright habit - Sorbus type
 Piers with lights
 Small tree with light foliage - Gladiolus
 Sunburst
 Resin gravel over existing driveway
 Brick edging
 Gravel over existing surface including pocket
 planting with drifts of aplanes and
 groundcover
 Excavate and place 450mm soil for mixed
 shrub and perennial planting
 New wall to be stone base up to 450mm
 high reducing in width to brick with a soldier
 course coping of blue bricks with a
 creasetile to a maximum 1800mm high
 Medium tree with broad crown and flowers -
 Malus Florabunda
 New gates including letter plate and box
 Side handgate for pedestrian access
 Low shrub hedge - resistant to salt spray
 and vandals - Genista Hispanica
 Gate apron for off-road temporary parking
 to be resin gravel or block paved
 Two medium trees to form arch over
 Gateway - Prunus Subortella Autumnalis



Extend flood wall approximately 1000mm
 Form stepped access over wall
 Blockwork wall with coping, render and
 painted
 Focal point
 Climbing evergreen on brick wall - Variegated
 Ivy
 Gravel over existing surface including pocket
 planting
 Stepping stones
 Winter flowering evergreen shrubs to soften
 wall - Viburnum Tinus
 Groundcover - Calamille/ Thyme (scented)
 Small evergreen tree - Crataegus Prunifolia
 Random paved terrace
 Paint single storey garage "soft pale green"
 Proposed storage shed
 Shade tolerant evergreen - Mahonia Charity
 Re-aligned steps with 1800mm high screen
 planting
 Trellis screen in front of shed with evergreen
 twining climber - Honersuckle/ Clematis
 Gravel over existing surface including pocket
 planting
 Small evergreen tree - Cotoneaster - Waterii
 Millstone water feature
 Small tree (Amalancher) to screen shed roof
 Bin screen
 Medium tree - Robinia Frisia
 Access path using slabs gained from site
 Screen shrubs approximately 1500mm high
 Medium tree to screen adjacent property -
 Eucalyptus Gunnii
 Curved brick path
 Specimen shrub - Acer Parmateum
 Random paved patio
 Specimen shrub - Phillidelphus (scented)
 Scented evergreen - Choisia Ternata
 Arched hoop over stepping stone access with
 adjacent shorter hoop with climbing Roses
 Gravel over existing surface including pocket
 planting
 Existing boundary hedge
 Excavate and place 450mm soil
 Woodland underplanting into new soil area &
 dress with bark mulch
 Tree grouping to screen adjacent properties
 and reduce road noise - Sorbus + Acer
 New wall to reduce road noise

NB: All trees to be planted into
 600x600x600mm pockets of fresh
 topsoil
 All pocket planted shrubs to be planted into
 450x450x450mm pockets or a minimum of
 6 times the size of the pot they are provided
 in.
 All pockets must break through the tarmac
 and stone sub-base to sub-soil to form
 adequate drainage.

GardenCreations

Your path to the perfect garden

Design for: **Front Garden**
 Designed by: **Hugh Frost**
 Drawn by: **Kevin Stewart**
 Design Ref: **2001107-1**
 Date: **10-August-01**
 Scale: **1:50**
 CORNER HOUSE FARM, HAWTON LANE, FARNDON, NOTTINGHAM,
 NG24 6SD
 PHONE (01636) 681 283 FAX (01636) 681 281

